

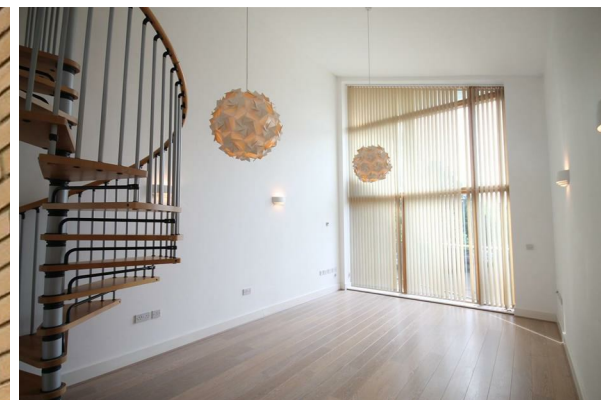


Redmayne Arnold & Harris
estate agents, letting agents & surveyors

rah.co.uk

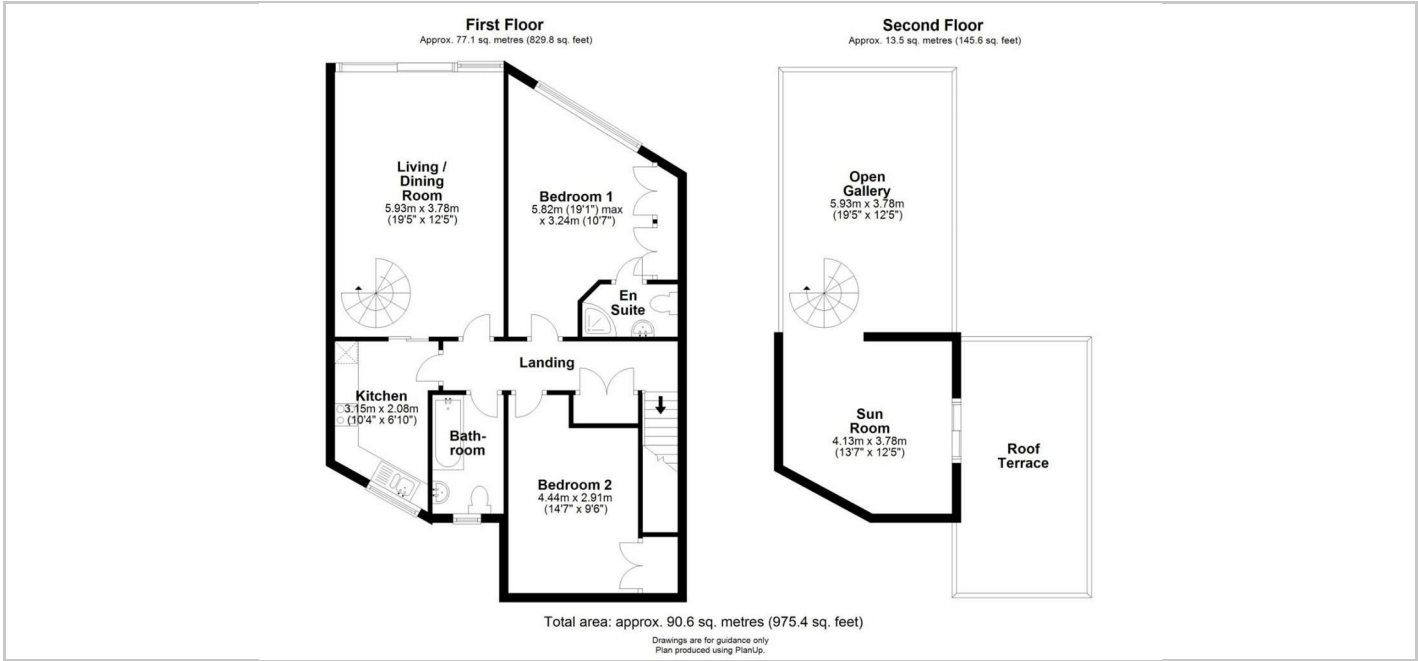


TO LET



4 Wessex Court, 21 Queen Ediths Way, Cambridge, CB1 7PH

£1,800 PCM



Directions

THE PROPERTY

First and second floor duplex apartment finished to a very high standard in an exclusive new development off Queen Edith's Way, located close to Addenbrookes Hospital. Living room/dining room with balcony. There is a spiral staircase in the living room leading to a mezzanine which could serve as an office. Two bedrooms, ensuite shower room and main bathroom. Under floor heating. The property benefits from a large roof terrace and with gated allocated parking for one car and bike storage.

This property will be managed by RAH.

- Council Tax Band: E
- EPC Rating: C
- Minimum 6 Month Tenancy
- Deposit: £2070
- Holding Deposit: £390

SITUATION

